

1

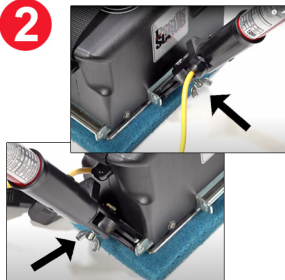
QUICK START GUIDE

Doodle Scrub EBG-9



Make certain a pad is between the grip face and the floor.

2



Press down firmly to attach the handle to either side. Loosen the wingnut if necessary.

3



After the handle is clipped on, tighten the wingnut.

4

Corded model →



← Battery model



Plug the 2 yellow cords together at the base for corded models, plug the black cord into the base for battery powered models.

5



Squeeze the trigger to operate the Doodle Scrub.

6



To remove the handle, loosen the wingnut, hold the handle upright and turn the handle to the side to release it.