

Pivot Maintenance & Troubleshooting



Pictured: 10 gauge extension cord plugged into machine cord.

EXTENSION CORD

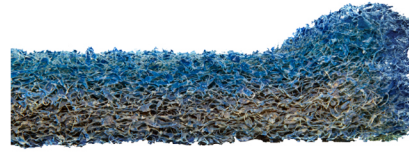
- Extension cords must be 10 gauge, and no longer than 50' (only use when necessary).



Pictured: Damaged power cord with exposed wire.

POWER CORD

- Do NOT operate equipment if AC power cord is cut,



Pictured: Overused blue driver pad.

DRIVER PAD

- Make certain driver pad is not worn, and is correctly placed.
- Inspect for wear/debris.
- Check every 15-30 minutes to maintain optimal performance.



Pictured: Overused pad.

WORN PADS

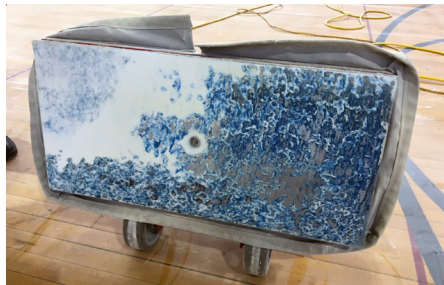
- Worn Pad. Replace the pad. Never use a worn pad. A worn pad can cause damage to the driver pad and the grip face.



Pictured: Incorrect grip face applied to the machine.

GRIP FACE

- Only use the Square Scrub replacement grip face.
- Always use the correct size grip face.
- Incorrect parts can cause damage to the machine.



Pictured: Grip face heavily damaged. Improper care.

GRIP FACE CARE

- Inspect grip face for wear regularly.
- Remove debris from grip face daily.
- Store on a dry pad to prevent damage from chemical stripper use.
- Never operate, transport, or store the machine without a pad to protect the grip face.



Pictured: Tile & Grout pad incorrectly used as a driver pad.

CORRECT PAD

- Use the correct pad for the job. Only use the pads for what they were made for.



Pictured: Large amounts of wax build-up.

DO NOT

- Do not allow build-up of any chemical or wax to dry and remain on the machine.
- Doing so can cause the eccentric assembly to lock up, and can cause damage to the motor.
- Always rinse out build-up between the base plate and bottom of the machine before it hardens. Wipe down and clean off the machine after every use.