

**SQUARE  
SCRUB**®  
Versatility<sup>2</sup>

# OWNER'S MANUAL

## SQUARE SCRUB SURFACE PREPARATION MACHINES

**Doodle  
SCRUB**  
BY SQUARE SCRUB

EBG-9

EBG-9-BATTSCRUB



**Doodle  
MOP**  
BY SQUARE SCRUB

EBG-16

EBG-16-BATTMOP



[www.squarescrub.com](http://www.squarescrub.com) / 800-557-6822



Made in the USA

# About your Square Scrub Surface Preparation Machine

---

## Doodle Scrub

The EBG-9 gets in those tight spaces the big machines can't. Doodle Scrub deep cleans under urinals, behind toilets, and even works great on stairs. With a new patent pending handle/base design, the Doodle Scrub handle can be attached on either the end or the middle of the base, allowing a more mop like motion for absolute versatility. Scrub pads are available in SQP dry prep, tile and grout, Xtreme sponge and more. The Doodle Scrub EBG-9 goes where you can't.

## Doodle Mop

The Doodle Mop EBG-16 is designed for everyday floor mopping and improved soil removal. The 4100-rpm motion drastically improves cleaning vs hand mopping. The Doodle Mop is perfect for mopping luxury vinyl tile, VCT, tile and grout and more. The Doodle Mop works best with 18" disposable microfiber mops. The disposable microfiber pads greatly reduce the risk of cross contamination between rooms. Made of 304 series stainless steel, the Doodle Mop is durable, light weight, and easy to clean. The Doodle Mop is mopping made easy.

---

**Please read all installation, operation, & safety instructions  
before using this machine.**

**\*\*\*This product is for industrial/institutional/commercial use only\*\*\***

**WARNING OF POTENTIAL INJURY MOVING PARTS UNPLUG BEFORE SERVICING!**

---

## General Safety

- This floor-finishing machine shall be grounded while in use to protect the operator from electric shock. The machine is provided with a three-conductor cord, and a three-contact grounding type attachment plug to fit the proper grounding type receptacle. The green (or green and yellow) conductor in the cord is the grounding wire. Never connect this wire to anything other than the grounding pin of the attachment plug.

- This machine is for use on a nominal 120-volt circuit and has a grounding plug that resembles the plug in figure 1. Make sure that the machine is connected to an outlet having the same configuration as the plug. See figure 1 on page 2.

- No adapter should be used with this machine.

## The Following instructions are for the Battery-Operated unit.

---

**“WARNING: Read all safety warnings and instructions. Failure to follow the warnings and instructions may result in electric shock, fire and/or serious injury.”**

**“AVERTISSEMENT: Lire toutes les mises en garde et toutes les instructions. Le non-respect des mises en garde et des instructions peut causer des chocs électriques, des Incendies et/ou des blessures graves.”**

- Recharge only with the charger specified by the manufacturer. A charger that is suitable for one type of battery pack may create a risk of fire when used with another battery pack. **“Recharger uniquement avec le chargeur prescrit par le fabricant. Un chargeur convenant à un type de batterie peut présenter un risque d’incendie lorsqu’il est utilisé avec une autre batterie.”**
- Under abusive conditions, liquid may be ejected from the battery; avoid contact. If contact accidentally occurs, flush with water. If liquid contacts eyes, additionally seek medical help. Liquid ejected from the battery may cause irritation or burns. **“En condition d’usage abusif, du liquide peut s’échapper de la batterie ; éviter tout contact avec ce liquide. En cas de contact accidentel, rincer abondamment avec de l’eau. En cas de contact avec les yeux, consulter également un médecin. Le liquide projeté peut causer des irritations ou des brûlures.”**
- Do not use a battery pack or appliance that is damaged or modified. Damaged or modified batteries may exhibit unpredictable behavior resulting in fire, explosion or risk of injury.
- Do not expose a battery pack or appliance to fire or excessive temperature. Exposure to fire or temperature above 130°C may cause explosion. The temperature of 130°C can be replaced by the temperature of 265°F.
- Follow all charging instructions and do not charge the battery pack or appliance outside of the temperature range specified in the instructions. Charging improperly or at temperatures outside of the specified range may damage the battery and increase the risk of fire. **Respecter toutes les instructions de chargement et ne pas charger la batterie ou l’appareil à des températures qui ne sont pas incluses dans la gamme de températures indiquées dans la notice d’instructions. Un chargement mal effectué.”**



## The Following instructions are for the Battery-Operated unit.

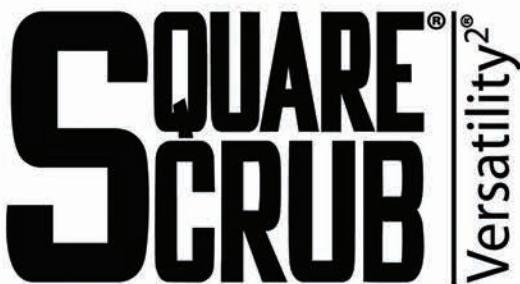
---

- Do not modify or attempt to repair the appliance or the battery pack (as applicable) except as indicated in the instructions for use and care. When the floor scrubber is provided with a rechargeable battery pack, it is intended to be used with Charger marked with Square scrub model number 051145. Placed on the front of the charger.

The charger employs double insulation in lieu of grounding.

In a double-insulated product, two systems of insulation are provided instead of grounding. No grounding means is provided on a double-insulated machine, nor should a means for grounding be added to the machine. Servicing a double-insulated machine requires extreme care and knowledge of the system, and should be performed only by qualified service personnel. Replacement parts for a double-insulated machine must be identical to the parts they replace. Always replace a damaged cord. A double-insulated product is marked with the words "DOUBLE INSULATION" or "DOUBLE INSULATED."

The symbol (square within a square) may also be marked on the charger body.



# Maintenance Schedule

## Prior to using (daily)

- Check AC power cord. Do NOT operate equipment if AC power cord is cut, frayed, or if ground is missing.
- Check grip face and driver pad. Inspect for wear/debris.

## After use (daily)

- Clean pad and base plate assembly. Remove or replace pad as needed.
- Inspect grip face for wear. Remove debris between grip face and base plate.
- Wipe entire unit with a damp microfiber cloth.
- Make certain a pad is placed on the grip face.

## Weekly Preventative Maintenance

- Check grip face for wear.
- Use a vacuum to clean away debris build-up around base plate.

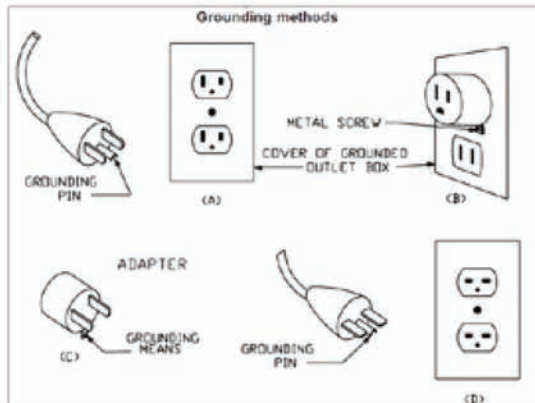
## Annually

- Replace ALL isolators.
- Bearing assembly should be replaced as needed.\*

\*The bearing assembly is considered to be a wear item. We recommend that the bearing assembly be replaced as needed. Unit will become noisy when bearing needs to be replaced.

**\*\*NOTE:** Be sure to replace isolators when you replace the bearing.

\*\*\*figure 1



# Manual Conventions

---

**Danger:** Indicates an imminently hazardous situation which, if not avoided, may result in death or serious injury.

**Caution:** Indicates that machine or property damage could result if instructions are not followed.

**Note:** Provides helpful information. *Severe bodily injury or death can occur to you or other personnel if warnings found on this machine or in this owner's manual are ignored. Read and observe all statements and instructions found on the machine and in the owner's manual.*

---

## Who to call for assistance?

If you work with a Square Scrub authorized dealer, contact them for assistance. If any contents of the box are missing, contact your Square Scrub authorized dealer. If you purchased your machine directly from Square Scrub, contact Square Scrub at 800.557.6822 for service in the United States and Canada. For worldwide service, call Square Scrub directly at 870.930.9898. Before calling, make sure you have the machine serial number, located on the machine handle. On battery units, the base and handle have different serial numbers.

## Liability Statement

This Square Scrub product has been built to the highest industry standards. Please note and heed the WARNING and caution labels that have been placed on the equipment and in this manual for your safety. PLEASE DO NOT ATTEMPT TO OPERATE OR REPAIR THIS EQUIPMENT WITHOUT ADEQUATE TRAINING . ANY USE, OPERATION OR REPAIR IN CONTRAVENTION OF THIS DOCUMENT IS AT YOUR OWN RISK. BY ACCEPTANCE OF THIS SYSTEM YOU HEREBY ASSUME ALL LIABILITY CONSEQUENT TO YOUR USE OR MISUSE OF THIS EQUIPMENT. SQUARE SCRUB SHALL NOT BE LIABLE FOR ANY INCIDENTAL, INDIRECT, SPECIAL OR CONSEQUENTIAL DAMAGE OF ANY KIND.

Equipment specifications, applications and options are subject to change at the sole discretion of Square Scrub without notice.

## Safety

All Square Scrub products are built to strict safety and reliability specifications in accordance with industry standards. Therefore, safety issues pertaining to operation and repair of Square Scrub equipment are primarily environmental and human interface. The following basic safety tips are given to ensure safe installation, operation and maintenance of Square Scrub machines.



## Important

- Caution- This machine is intended for indoor use only.
- Caution- This machine is to be stored indoors only.
- Never leave the machine unattended while the power cord or battery is connected.
- Do not operate this machine while under the influence of alcohol or other drugs.



### **PPE Equipment**

- Never allow children under age 18 to operate this machine.
- Unplug machine from power source before changing pad.
- Always wear personal protective equipment (PPE) when operating this machine.
- Never inhale dust created by the use of this machine. Any modifications to this machine may result in damage to the machine or injury to the operator or others nearby. Alterations to the machine will also void any and all warranty and liabilities.
- Sanding wood decks is not recommended by Square Scrub due to uneven surfaces which could lead to damage to the machine. Some pressure treated wood found in decking contains arsenic that, when sanded, will create hazardous dust. Square Scrub assumes no liability if the machine is used on decks, and damage caused from sanding pressure treated wood will not be warranted.
- Do not operate this machine around fuels, solvents, flammable floor finishes, thinners, wood particulate or any flammable materials. Cigarette lighters, pilot lights, electrical sparks and all other sources of ignition should be extinguished or avoided. Work areas should be well ventilated.
- Keep the power cord clear of the pad. Always lift the cord over the machine. Do not pull on the power cord in an attempt to move the machine. This could result in electrocution. Operating this machine with a damaged power cord could lead to electrocution or fire. Cord should remain clear of moving parts during operation. Never use the cord to navigate the machine. If the supply cord is damaged, it must be replaced by the manufacturer, its service agent or similarly qualified persons in order to avoid a hazard.
- Servicing this machine while still connected to a power source could lead to electrocution or fire. Before performing machine service or maintenance, disconnect the machine from the power source.
- Do not use machine if it has been sprayed with water or left out in the rain. This could result in a shock injury or electrocution.
- Keep feet, hands, and loose clothing away from any moving parts on the machine to avoid injury. Disconnect power cord before changing the pad or when servicing. Damage can occur to the machine or to other property if instructions in the owner's manual are not followed.
- This appliance is not intended for use by persons (including children) with reduced physical, sensory or mental capabilities, or lack of experience and knowledge, unless they have been given supervision or instruction concerning use of the appliance by a person responsible for their safety.

**Warning: This appliance is not suitable for picking up hazardous dust.**

# Transport of Machine

---

To transport this machine, the following procedure is advised:

- Unplug machine from power source.
- Always leave a pad on the machine to protect the grip face from damage in transport and storage.
- Secure machine when transporting in a vehicle to prevent movement.
- **NEVER PICK THE DOODLE SCRUB OR DOODLE MOP UP BY THE HANDLE ALONE!**
- Always pick the Doodle Scrub or Doodle Mop up with one hand on the handle and the other hand picking up the base. Failure to do so could result in damage to the machine.

## Operating Instructions

---

1. Move machine to work location. Never operate, transport, or store the machine without a pad to protect the grip face.
2. Affix the handle clip onto either of the base clips.
3. Ensure that the motor plug and handle plug are fully seated before operating.
4. Connect the battery for battery powered models, or plug machine into grounded power outlet.
5. Hold the machine handle with one hand while gently pressing the switch on the top of the handle with the other hand.
6. Begin moving the machine over the floor in either a mop-like motion or along edges.
7. Continue moving the machine over the selected surface, checking your pad every 15 to 30 minutes (depending on pad in use) to maintain optimum performance.

## Airborne Noise and Vibration Emissions

<u>Sound Power Level</u>	<u>Vibration Total at Base</u>
<b>120V:</b> Under 57dBA	<b>120V:</b> Avg. 6.5 mm /s <sup>2</sup> , max at 6.9 mm /s <sup>2</sup>
<b>240V:</b> Under 57dBA	<b>240V:</b> Avg. 5.8 mm /s <sup>2</sup> , max at 6.0 mm /s <sup>2</sup>
<b>42Vdc:</b> Under 57dBA	<b>42Vdc:</b> Avg. 6.5 mm /s <sup>2</sup> , max at 6.9 mm /s <sup>2</sup>



## Plugging in the Charger

---



# Grip Face Care

## Be kind to your grip face

---

### The grip face has a very tough life!

The Industrial Velcro one-piece grip face material on this Square Scrub machine is the very best we have ever tested! With proper care and attention, it will do a great deal of work for you. Our machine drives a huge amount of energy into the grip face and then the driver pad and then to the floor. Some pads are more durable and long lasting than others. All of the pads that we may use will wear out. The driver pads must be checked on a regular basis. The amount time the driver will last varies greatly based on the task being done. Some pads last longer than others in similar conditions. We encourage you to do some testing on pads to find the one that works best for your situation. Check the pad condition very often until you get a feel for about how long it is going to hold up. Time is the factor in how long a driver pad can last. Square footage is not a good measurement.

Very aggressive wet stripping pads that are being used in wet high alkaline caustic conditions really destroy driver pads quickly!!!! Some pads will break down in as little as five minutes. Other pads may last 15 minutes while other might be even better and last 30 minutes. It is difficult to know how long the driver will hold up. There are numerous different pads and chemical strippers on the market.

Diamond grinding with Trizac™ or other types of diamonds uses lots of energy. Diamonds are doing a great deal of work on the floor surfaces. The result of the grinding is fine particles of the material being polished are contaminating the pad. These gritty particles get to work quickly breaking down and destroying not only the driver pads but also the grip face itself. If you are doing a diamond grinding project please have some spare grip faces on hand. Even being super cautious and aware, grip faces will still get destroyed.

Here are links to our website videos showing how to replace the grip face. The first one shows the best way to do a replacement. The second one shows a method that will work in the field if you are in the middle of a project and need to get back to work fast.

[www.squarescrub.com/assets/grip-face-replacement.mp4](http://www.squarescrub.com/assets/grip-face-replacement.mp4)

[www.squarescrub.com/assets/grip-face-replacement-fast.mp4](http://www.squarescrub.com/assets/grip-face-replacement-fast.mp4)

This is our Square Scrub driver pad that seems to perform well in most situations.

SS P0511DRIVER | White Driver Pad for the Doodle Scrub | Sold 48/case

SS P0516DMF | Disposable Microfiber Pad for the Doodle Mop | Sold 240/case

Thick white pads work and thick blue also work. Test each pad in your situation with your chemicals and your floors to determine what is best for you.

# Grip Face Care

---

## **Check the driver pad every 15 minutes to start:**

After you have ran the machine and the pads you will establish a realistic pad life expectation. You must tilt the machine on its back to inspect the pad. Many times, the outside edge of the pad will still look new but the underside of the pad where the work is being done will be destroyed.

## **Rotate the driver pad and working pad each time you check it:**

We see the rear right-hand corner get worn more quickly than the rest of the pad most of the time. Our machine rotates clockwise which creates more pressure on that side. This is where you will see wear the soonest.

## **Wet chemical stripping:**

Chemical strippers speed up how fast the pads break down. Wet stripping is normally done with very aggressive super abrasive pads. This type of aggressive pad also works to destroy the driver pads fast. Watch your pads very closely until you get a feel for how long they will last.

## **Test out different pads:**

Test several different pads for yourself in your buildings with your floors and your chemicals. We have tested lots of pads from everyone we know of that makes pads. Some pads are better than others. Please try some options if you are unhappy with how well the pads you are using hold up.

## **Store your machine on its back if possible:**

Never put your machine on the floor without a pad covering the grip face. The "teeth" on the grip face can be damaged if they don't have a pad on them

## **Be kind to your grip face. It has a very tough life!**

---

SS 051103V | Doodle Scrub grip face | Sold Individually

SS 051603V | Doodle Mop grip face | Sold Individually



## Troubleshooting Corded Units

---

Problem	Cause	Action
Unit runs correctly but stops. It works fine after 3-10 minutes.	Incorrect pad is being used. Only use pads recommended by Square Scrub.  See page 17 for a complete list of recommended pads.	Use correct pad. If problem continues contact you nearest Square Scrub dealer.
Machine will not start	Not connected to power source. Voltage too low. Defective switch.	Check power source connection and lighted. Have electrician check outlet. Contact Square Scrub dealer
Runs erratically	Low voltage from excessive length or undersized extension cord. Defective start switch. Defective motor low voltage.	Use 10 gauge extension cord, not more than 25' long.  Contact Square Scrub dealer. Contact Square Scrub dealer.
Fuse/Circuit Breaker Trips	Low voltage.  Low input volts.	Allow the motor to cool. Eliminate extension cord. Locate power cord closer to work site. Have voltage checked by electrician.
Machine pulls hard to one side <b>Note:</b> The rubber isolators on the EBG are considered wear items. It is recommended to replace the entire set of all four isolators once per year (or sooner under heavy use) to prevent failure and damage to the machine.	Worn Pad.  Rubber isolators are worn out.	Rotate pad 180 degrees. Flip pad over. Replace pad. Replace isolators.
Machine is noticeably louder than it was when originally purchased	Rubber isolators worn.	Replace isolators

## Troubleshooting Battery Units

---

Problem	Cause	Action
Unit will not run	Dead battery  Battery not connected	Charge battery  Connect battery to motor

# Doodle Scrub & Doodle Mop 1 Year Limited Warranty on parts and 90 days Limited Warranty on Labor

---

## General

This Square Scrub EBG-9 Doodle Scrub Floor Preparation Machine is warranted to be free from defects in materials and workmanship under normal use and service for a period of one year on machine handle and base when operated and maintained in accordance with Square Scrub Maintenance and Operating Instructions. The warranty will commence on the purchase date by the original end user from an authorized Square Scrub dealer and is subject to proof of purchase. If proof of purchase cannot be provided, the warranty shall begin from the date of shipment to an authorized Square Scrub dealer. Parts replaced or repaired under warranty are guaranteed for the remainder of the original warranty period. The warranty period is subject to the conditions stated below.

The battery and charger are warranted for 1 year to the original purchaser to be free from defects in material and workmanship. This guarantee does not cover damage due to abuse, normal wear, improper maintenance, neglect, unauthorized repair/alteration.

Labor to repair the unit is also included for the first 90 days from date of original purchase. Unit must be returned to Square Scrub for all repairs other than the handle switch. End user must ship the unit to Square Scrub at their expense. Unit will be repaired or replaced and returned to the end user or the authorized Square Scrub dealer by normal ground shipping method at Square Scrub's expense. Square Scrub is not responsible for lost time involved in the repair time.

## Disqualifications

This warranty shall not apply to repairs resulting from accidents or misuse, damage in transit, overloading the capacity of the machine, or damage resulting from lack of proper maintenance or care as described in the Maintenance Schedule and General Operating Instructions listed in the Owner's Manual. Minor adjustments, not related to the replacement of parts, are not covered. Repairs or alterations made by an organization other than the factory or an Authorized Service Center are not covered and will void warranty as it relates to the parts or systems repaired or altered by the non-authorized organization.

## Product Exceptions, Exclusions, & Wear Items

- Machine Cord
- Blue Driver Pad (shipped with machine)
- Grip face
- Cushion hand grip
- Rubber Isolators
- Eccentric Assembly (includes bearing)

If a difficulty develops with the product, contact your local Square Scrub dealer or call Square Scrub at 800.557.6822. Only Square Scrub can authorize repairs under warranty. Square Scrub may elect to require the return of components to validate a claim. Any defective part to be returned must be shipped freight prepaid to an authorized Square Scrub Dealer/Service Center or to the Square Scrub factory. Travel time and mileage is not covered on any repairs.

Square Scrub's liability under this warranty is limited to repair of the product and/or replacement of parts and is given to purchaser in lieu of all other remedies, including INCIDENTAL AND CONSEQUENTIAL DAMAGES. THERE ARE NO EXPRESS WARRANTIES OTHER THAN THOSE SPECIFIED HEREIN. THERE ARE NO WARRANTIES WHICH EXTEND BEYOND THE DESCRIPTION OF THE FACE HEREOF. NO WARRANTIES, INCLUDING BUT NOT LIMITED TO WARRANTY OF MERCHANTABILITY, SHALL BE IMPLIED.

Please register your machine on our website within thirty (30) days of purchase to assist Square Scrub in providing the performance you expect from your new floor machine.

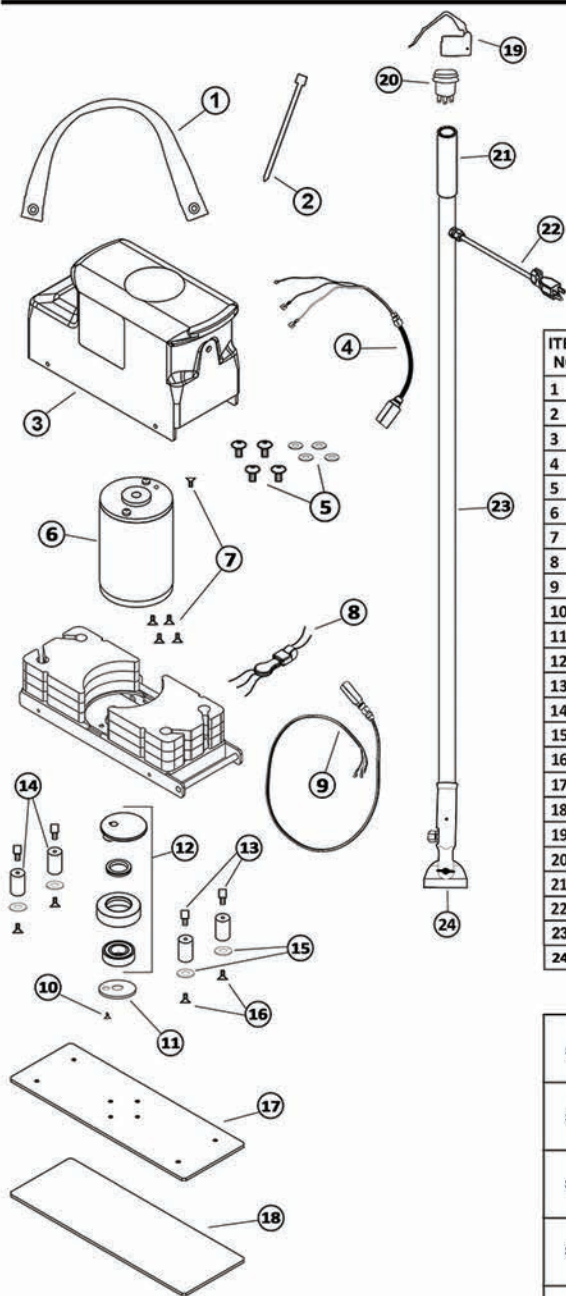
Repairs after the first 90 days of the warranty period but still during the first 12 months will be done for \$69 to cover labor and Square Scrub will prepay the shipping to return the Doodle Scrub if it is an under warranty repair.

Repairs after the first 12 months will be done for \$69 flat fee plus the cost of parts and shipping.

Machine Serial # \_\_\_\_\_

Date of Purchase: \_\_\_\_\_

# Doodle Scrub Parts Breakdown



## PARTS

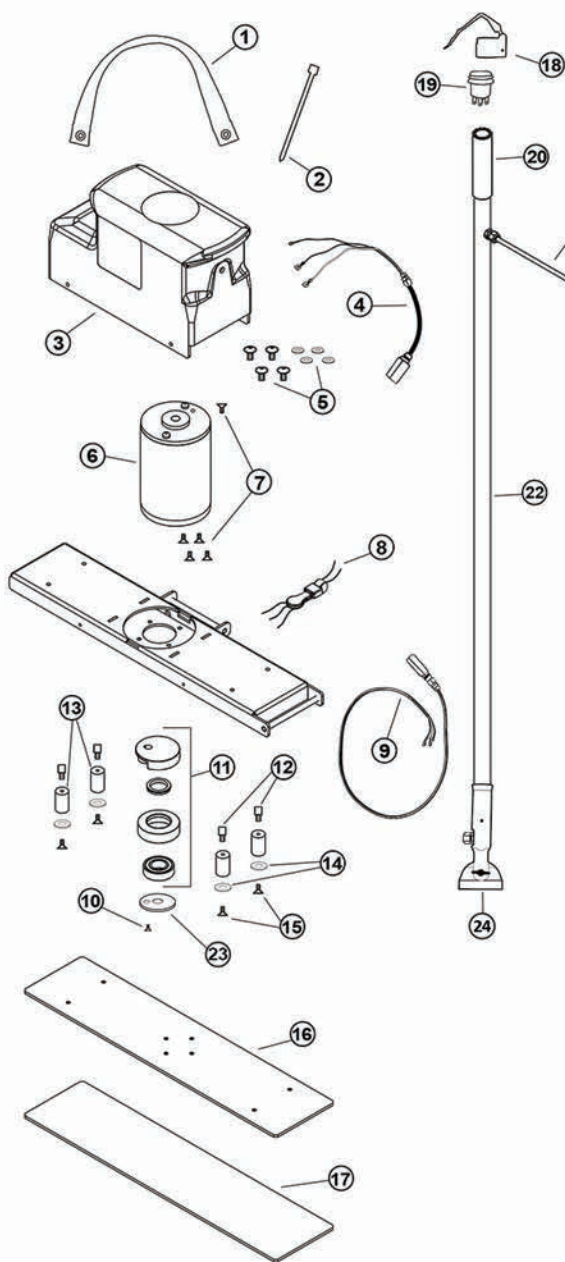
ITEM NO.	PART NO.	PART DESCRIPTION
1	SS 051190	CARRY STRAP
2	N/A	ZIP TIE
3	SS 051161	DOODLE COVER
4	INCLUDED IN KIT	MOTOR CORD
5	INCLUDED IN KIT	COVER SCREW (4) / WASHERS (4)
6	INCLUDED IN KIT	MOTOR
7	INCLUDED IN KIT	MOTOR BOLT (6)
8	SS 051170	PTC/VARISTOR HARNESS
9	INCLUDED IN KIT	HANDLE CORD
10	INCLUDED IN KIT	MOTOR SHAFT BOLT
11	INCLUDED IN KIT	CRUSH WASHER
12	INCLUDED IN KIT	ECCENTRIC ASSEMBLY
13	INCLUDED IN KIT	TOP ISOLATOR BOLT
14	INCLUDED IN KIT	ISOLATOR (4)
15	INCLUDED IN KIT	ISOLATOR SPACER (4)
16	INCLUDED IN KIT	BOTTOM ISOLATOR BOLT (4)
17	SS 051134	BASE PLATE
18	SS 051103V	GRIP FACE
19	SS 051180	TRIGGER
20	SS 051104	EBG-9 SWITCH
21	SS 0101Z	HANDLE GRIP
22	INCLUDED IN KIT	POWER CORD
23	INCLUDED IN KIT	HANDLE
24	SS 051152	BASE CLIP

## KITS

SS 051166	EBG-9 COVER REPLACEMENT KIT (Includes: 1, 2, 3, 4, 5)
SS 051106	MOTOR REPLACEMENT KIT (Includes: 6, 7, 10)
SS 051115	BASE PLATE KIT (Includes: 5, 10, 11, 12, 13, 14, 15, 16, 17, 18)
SS 051157	HANDLE CONVERSION KIT (Includes: 5, 3, 4, 8, 9, 22, 23)
SS 051101	ISOLATOR REPAIR KIT (Includes: 5, 10, 13, 14, 15, 18)



# Doodle Mop Parts Breakdown



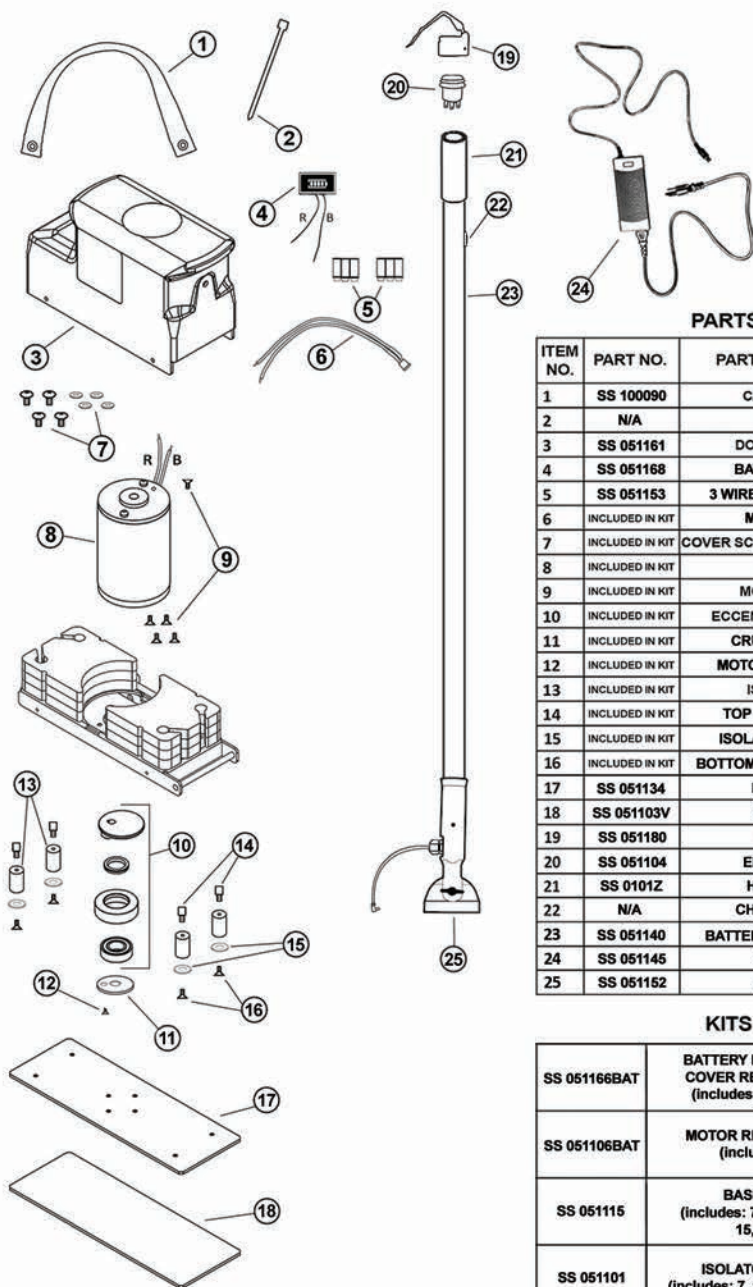
## PARTS

ITEM NO.	PART NO.	PART DESCRIPTION
1	SS 100090	CARRY STRAP
2	N/A	ZIP TIE
3	SS 051661	DOODLE COVER
4	INCLUDED IN KIT	MOTOR CORD
5	INCLUDED IN KIT	COVER SCREW (4) / WASHERS (4)
6	INCLUDED IN KIT	MOTOR
7	INCLUDED IN KIT	MOTOR BOLT (6)
8	SS 061170	PTC/VARISTOR HARNESS
9	INCLUDED IN KIT	HANDLE CORD
10	INCLUDED IN KIT	MOTOR SHAFT BOLT
11	INCLUDED IN KIT	ECCENTRIC ASSEMBLY
12	INCLUDED IN KIT	TOP ISOLATOR BOLT
13	INCLUDED IN KIT	ISOLATOR (4)
14	INCLUDED IN KIT	ISOLATOR SPACER (4)
15	INCLUDED IN KIT	BOTTOM ISOLATOR BOLT (4)
16	SS 051634	BASE PLATE
17	SS 051603V	GRIP FACE
18	SS 051180	TRIGGER
19	SS 051104	EBG-9 SWITCH
20	SS 0101Z	HANDLE GRIP
21	INCLUDED IN KIT	POWER CORD
22	INCLUDED IN KIT	HANDLE
23	INCLUDED IN KIT	CRUSH WASHER
24	SS 051152	BASE CLIP

## KITS

SS 051666	EBG-16 COVER REPLACEMENT KIT (includes: 3, 4, 5)
SS 051106	MOTOR REPLACEMENT KIT (includes: 6, 7, 8, 9, 10)
SS 051615	BASE PLATE KIT (includes: 5, 10, 11, 12, 13, 14, 15, 16, 17, 23)
SS 051601	ISOLATOR REPAIR KIT (includes: 5, 10, 12, 13, 14, 15, 17)

# Battery Doodle Scrub Parts Breakdown



## PARTS

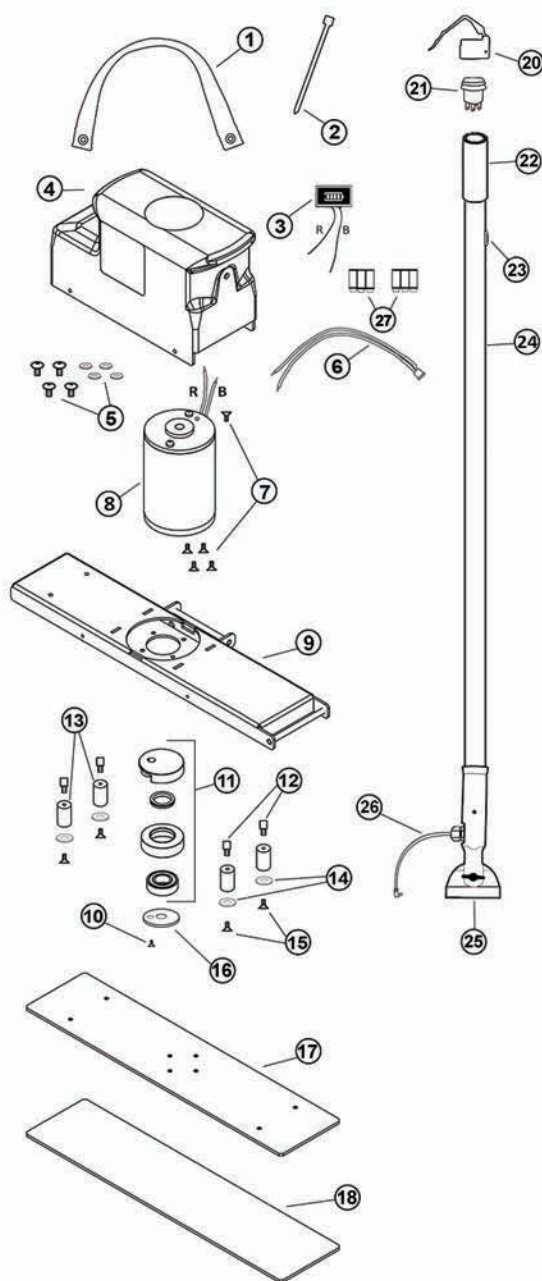
ITEM NO.	PART NO.	PART DESCRIPTION
1	SS 100090	CARRY STRAP
2	N/A	ZIP TIE
3	SS 051161	DOODLE COVER
4	SS 051168	BATTERY METER
5	SS 051153	3 WIRE CONNECTOR (2)
6	INCLUDED IN KIT	MOTOR CORD
7	INCLUDED IN KIT	COVER SCREW (4) / WASHERS (4)
8	INCLUDED IN KIT	MOTOR
9	INCLUDED IN KIT	MOTOR BOLT (6)
10	INCLUDED IN KIT	ECCENTRIC ASSEMBLY
11	INCLUDED IN KIT	CRUSH WASHER
12	INCLUDED IN KIT	MOTOR SHAFT BOLT
13	INCLUDED IN KIT	ISOLATOR (4)
14	INCLUDED IN KIT	TOP ISOLATOR BOLT
15	INCLUDED IN KIT	ISOLATOR SPACER (4)
16	INCLUDED IN KIT	BOTTOM ISOLATOR BOLT (4)
17	SS 051134	BASE PLATE
18	SS 051103V	GRIP FACE
19	SS 051180	TRIGGER
20	SS 051104	EBG-9 SWITCH
21	SS 0101Z	HANDLE GRIP
22	N/A	CHARGING PORT
23	SS 051140	BATTERY PACK / HANDLE
24	SS 051145	CHARGER
25	SS 051152	BASE CLIP

## KITS

SS 051166BAT	BATTERY POWERED EBG-9 COVER REPLACEMENT KIT (includes: 1, 2, 3, 4, 5, 6, 7)
SS 051106BAT	MOTOR REPLACEMENT KIT (includes: 8, 9, 12)
SS 051115	BASE PLATE KIT (includes: 7, 10, 11, 12, 13, 14, 15, 16, 17, 18)
SS 051101	ISOLATOR REPAIR KIT (includes: 7, 12, 13, 14, 15, 16, 18)

# Battery Doodle Mop

## Parts Breakdown



### PARTS

ITEM NO.	PART NO.	PART DESCRIPTION
1	SS 100090	CARRY STRAP
2	N/A	ZIP TIE
3	SS 051168	BATTERY METER
4	SS 051661	DOODLE COVER
5	INCLUDED IN KIT	COVER SCREW (4) / WASHERS (4)
6	INCLUDED IN KIT	MOTOR CORD
7	INCLUDED IN KIT	MOTOR BOLT (6)
8	INCLUDED IN KIT	MOTOR
9	N/A	BASE
10	INCLUDED IN KIT	MOTOR SHAFT BOLT
11	INCLUDED IN KIT	ECCENTRIC ASSEMBLY
12	INCLUDED IN KIT	TOP ISOLATOR BOLT
13	INCLUDED IN KIT	ISOLATOR (4)
14	INCLUDED IN KIT	ISOLATOR SPACER (4)
15	INCLUDED IN KIT	BOTTOM ISOLATOR BOLT (4)
16	INCLUDED IN KIT	CRUSH WASHER
17	SS 051634	BASE PLATE
18	SS 051603V	GRIP FACE
19	SS 051145	CHARGER
20	SS 051180	TRIGGER
21	SS 051104	EBG-9 SWITCH
22	SS 0101Z	HANDLE GRIP
23	N/A	CHARGING PORT
24	SS 051140	BATTERY PACK / HANDLE
25	SS 051152	BASE CLIP
26	N/A	HANDLE CORD
27	SS 051153	3 WIRE CONNECTOR(2)



## Doodle Scrub Pad Information

---

### **Blue Tile & Grout Pad | SS P0511TGBV | Sold Individually**

Our Tile & Grout Pad is best used on grouted tile floors, but can be used very effectively on terrazo, poured non-slip, concrete and other uneven floors. Use wet on several surfaces.

### **White Driver Pad | SS P0511DRIVER | Sold - 48/case**

The White Driver Pad is primarily a spacer pad. Just 1/4" thick, use this pad with SQP, SHO, and diamonds. Always check spacer and driver pads frequently for wear and replace as needed.

### **Blue Driver Pad | SS P0511BLU | Sold - 18/case**

This medium to heavy duty blue pad can be used for heavier cleaning and buffing situations, but primarily used as a spacer pad. Always check spacer and driver pads frequently for wear and replace as needed. Use wet or dry on VCT and tile.

### **White Pad | SS P0511WHT | Sold - 16/case**

The White Pad is used as a light duty polish pad. The 1" thick pad is used without a driver pad, and is great for spreading chemicals while buffing.

### **Xtreme Sponge | SS P0511XTR | Sold - 5/case**

Use the Xtreme Sponge to remove scuff marks on VCT or bathroom tile. A little water and this melamine pad deep cleans & restores shine between refinishing jobs. Use wet on VCT and tile.

### **SHO Pad | SS P0511SHO | Sold - 20/case**

The SHO Pad should be used only for the heaviest of chemical stripping jobs. Extremely abrasive and heavy with dense fibers. Best when dirt and buildup are severe. Use wet on VCT and tile.

### **SQP Pad | SS P0511SQP | Sold - 60/case**

SQP is a thin pad designed to remove floor finish without chemicals. Remove several layers of acrylic finish to prep for recoating. USE dry or wet on VCT and tile.

## Doodle Mop Pad Information

---

### **Disposable Microfiber Pad | SS 0516DMF | Sold - 240/case**

The Doodle Mop disposable microfiber pad helps increase soil removal and reduce cross contamination.

### **Xtreme Sponge | SS P0516XTR | Sold - 5/case**

Use the Xtreme Sponge to remove scuff marks on VCT or bathroom tile. A little water and this melamine pad deep cleans & restores shine between refinishing jobs. Use wet on VCT and tile.

## This image shows a single sheet of white paper with horizontal ruling lines. The lines are evenly spaced and run across the width of the page. There are no margins, text, or other markings on the paper.



## SQUARE SCRUB SURFACE PREPARATION MACHINES



Scan to Register  
Your New Machine



[www.squarescrub.com](http://www.squarescrub.com) / 800-557-6822