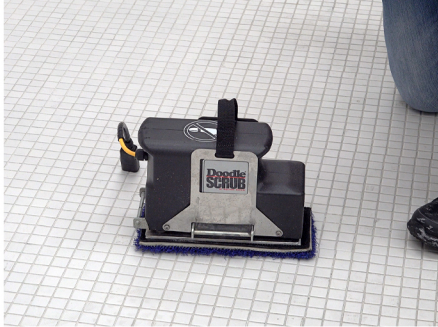
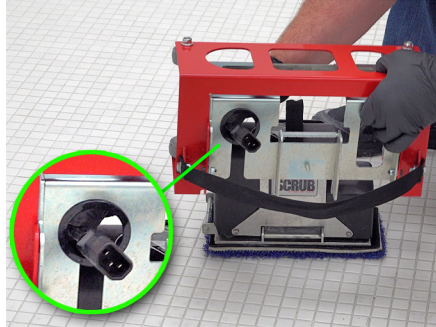


Doodle Skate Set-Up



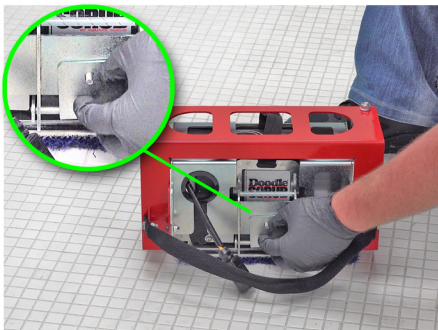
1. Disconnect the power connector and remove the handle.



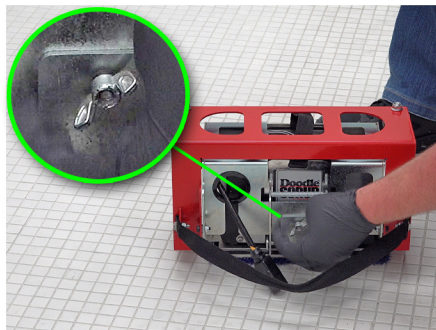
2. Lower the Skate down onto the Doodle Scrub® while feeding the power cord through the hole.



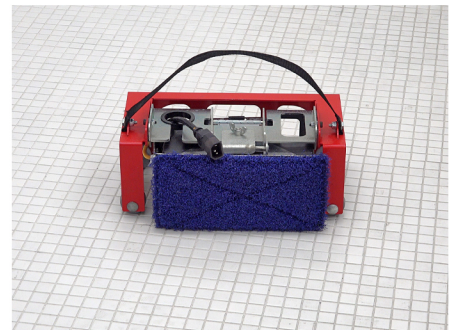
3. Lower the Doodle Skate all the way down on the Doodle Scrub®.



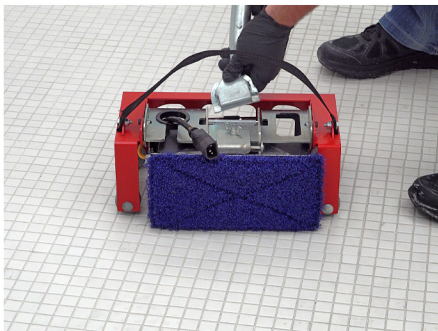
4. Place the metal plate over the bolt on the Skate and the side mount on the Doodle Scrub®.



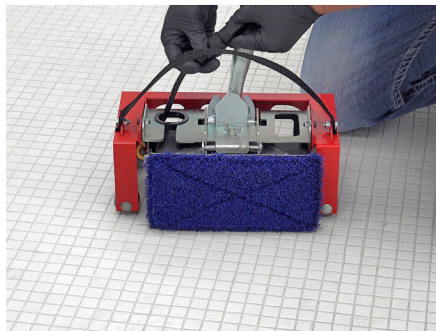
5. Tighten down the metal plate with the wing nut.



6. Turn the Doodle Skate on its side so it's resting on the wheels.



7. Attach the handle to the top of the Doodle Skate.



8. Plug the power cord from the Doodle Scrub® into the handle.



Tip: Pushing against the Doodle Skate with your foot can help scrub even deeper.